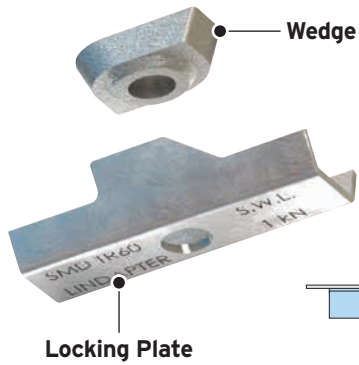


Type TR60

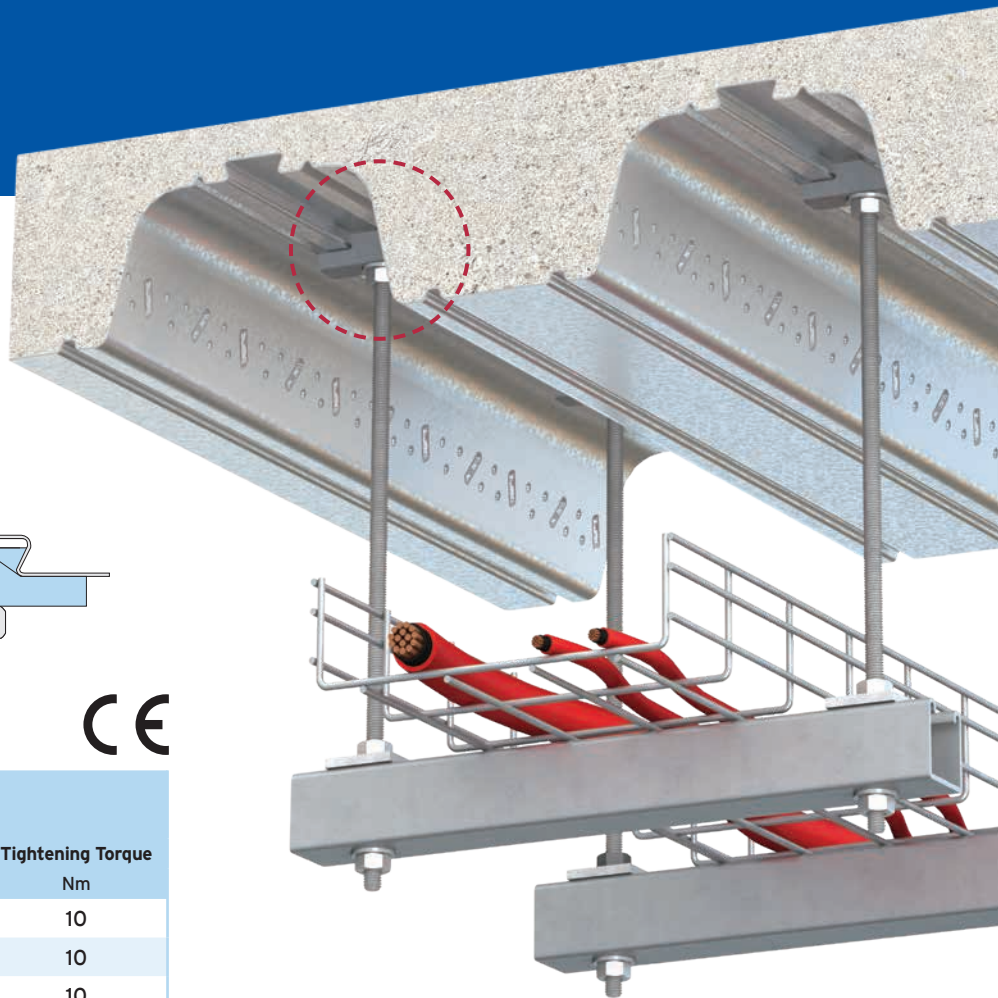
Designed for the TR60+ and TR80+ profiles manufactured by Structural Metal Decks (SMD).



Locking Plate: Pre-galvanised strip.
Wedge: Malleable iron, bright zinc plated.

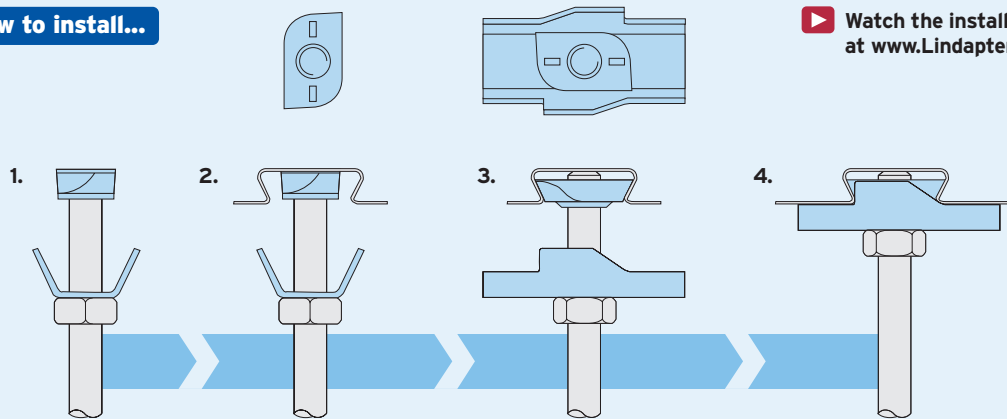


Product Code	Rod min 4.6	Safe Working Load (FOS 3:1)	
		Tensile / 1 Rod kN	Tightening Torque Nm
TR6006	M6	1.0	10
TR6008	M8	1.0	10
TR6010	M10	1.0	10



How to install...

▶ Watch the installation video at www.Lindapter.com



- 1) Pre-assemble the locking plate and wedge (flat surface up) onto the threaded rod.
- 2) Insert the wedge into the re-entrant channel of the decking.
- 3) Rotate until the chamfered cams engage on the sides of the channel.
- 4) Slide the plate up the threaded rod and over the wedge to lock it into position in the channel. Tighten the locknut beneath the plate to hold the assembly in position.

- ▶ Install the decking fixings after the concrete has been poured and has reached full strength.
- ▶ If the decking profile is deformed or distorted, do not install the fixing. If in doubt, contact the Technical Support team for advice.



For Characteristic Resistances when designing a connection to Eurocode 3, please refer to DoP No.020 on the website www.Lindapter.com